

Bareboat Charter Joining Instructions

Yacht - Dufour 412 “Snagglepuss & Boo Boo”

Location: B Pontoon, Mercury Yacht Harbour, Hamble, SO31 4HQ

Your Contact

Chris Warwick - Duty Mobile: 07798 563860
Steve Durkin - Duty Mobile: 07958 613045
Melanie Warwick - Office Mobile: 07884 183299



On Arrival

Please pop into our office on the left side of the car park or call Chris Warwick on arrival on T: 07798 563860. If however you are delayed, please call giving us some notice. **It is important both the Skipper and 1st Mate are available for the handover and the process takes about 30 minutes.** Please read through the Additional Joining Instructions during Coronavirus.

What's Provided on board	What to Bring
Full safety* inventory & galley equipment	All bedding - pillows, duvet, ground sheet / sleeping bags
Welcome Pack containing:-	Towels - hand & bath
• Selection of tea, coffee, sugar, hot chocolate, biscuits, mineral water, etc.	Food & drinks (+ milk for your tea & coffee)
• Washing up liquid	Condiments i.e. salt, pepper, sauces, marmalade, jam
• T Towels	Waterproofs – available to hire on request
• Bin Bags	Clothes to suit all conditions
• Dishcloth & Sponges	Wash kit
• Toilet paper & cleaner	Hat, gloves, sunglasses
• Antibac spray for kitchen	Sun cream!
• Antibac spray for bathroom	Phone / computer chargers
• Hand Sanitiser	Child lifejacket / buoyancy aid if required

**Note: lifejackets are adult sizes*

Yacht Fuel “Fair Usage” Flat Fee

To avoid you having to queue up at the end of a day or weekend for fuel, we are charging a “fair usage” flat fee for day charters £10, weekend charters £25, to be paid in advance. Longer charters we ask clients to refill either the day before returning or book in for fuel at Port Hamble before arriving back in Mercury.

Berthing: Berthing fees are covered whilst at Mercury Yacht Harbour, all other berthing fees are your responsibility

Personal Accident Insurance: With regards to insurance, we cover third party liability but NOT personal accident and personal possessions.

Lifejackets for children - We recommend you have lifejackets fitted a child's correct size/weight.

We have 3 junior self inflating lifejackets available on request. They are for children weighing 25-60 Kg (see link below to actual lifejacket so you can check if suitable for your child).

<https://www.oceansafety.com/product-range/lifejackets/product/kru-sport-junior#details>

Younger children are better to have a buoyancy aid style which you can purchase from online chandleries:

<https://www.force4.co.uk/item/Baltic/Childs-100N-Lifejacket/T3S>

<https://www.marinesuperstore.com/lifejackets-buoyancy-aids/lifejackets/crewsaver-spiral-childrens-lifejacket>



UNIVERSAL
y a c h t i n g

THE YACHT – DUFOUR 412 “SNAGGLEPUSS & BOO BOO”

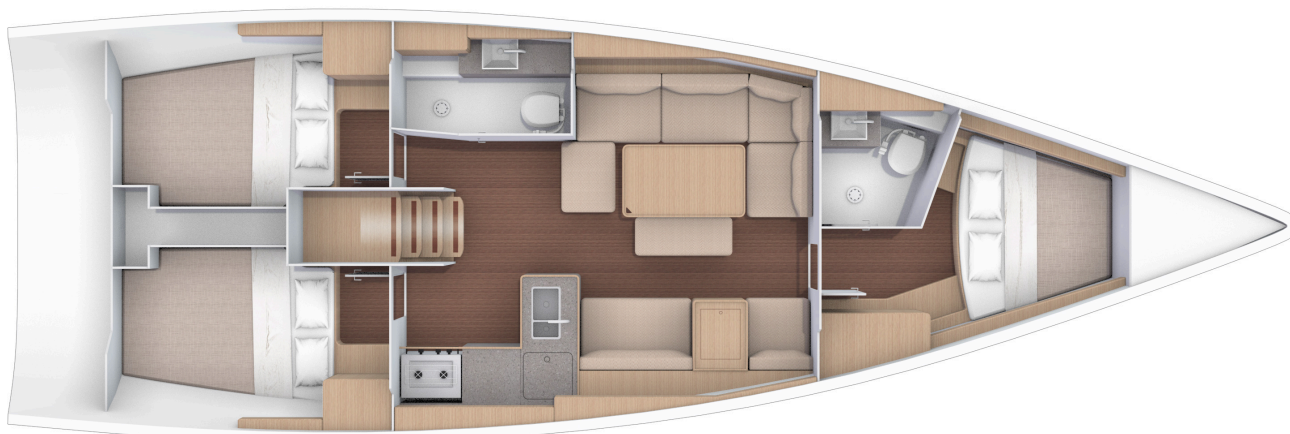
Yacht at a glance.....

- Based at Mercury Yacht Harbour
- First launched in April 2019
- Licensed for 8 people MCA Cat 2 > 24hrs
- Classic mainsail with slab reefing and stack pack
- Furling genoa
- Twin Wheel steering
- Hot water
- Fridge
- Electric windlass
- Radio CD player with ipod connection
- GPS Chart plotter at helm position
- Speed, Depth & Wind Instruments



Facts & Figures

- LOA – 12.35m
- Beam – 4.20m
- Displacement – 8940kg
- Draft – 2.1m
- Sleeps – 8 persons
- Fuel – 200L
- Water – 380L



Universal Yachting at Mercury Yacht Harbour

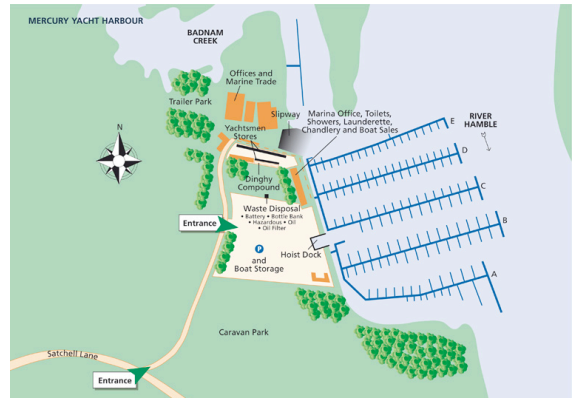
Address

Universal Yachting
Mercury Yacht Harbour
Satchell Lane
Hamble
Southampton
Hampshire, SO31 4HQ

MDL Marina Office Tel: 023 8045 5994
Universal Yachting Office No: 023 8045 8737
Universal Yachting Duty Mobile: 07798 563860

About Mercury Yacht Harbour

Originally built by Sir Robin Knox Johnston, Mercury Yacht Harbour is situated in a sheltered wooded site where the shallow waters of Badnam Creek join the River Hamble. Just a 20 minute walk from Hamble village.



Marina Facilities

- Showers & Toilets
- Laundry facilities
- Electronic services
- Chandlery
- MDL WiFi
- The Gaff Rigger Restaurant & Bar - bookings for takeaways & eat should be made in advance via their website: www.gafrigger.co.uk T: 02380 455 595 E: admin@gafrigger.co.uk

Local Village - Hamble

Hamble le Rice has a small Co-op with cashpoint, and some small shops including a deli. NatWest and Barclays Banks have a presence here too.

Eating in Hamble

Hamble has plenty of bars and restaurants including a fish and chip shop and an Indian restaurant. Pubs include The Bugle, The King and Queen (which has a launderette available for visiting yachtsman), The White Hart and the Victory Inn. Restaurants in the marinas are Gaff Rigger at Mercury Yacht Harbour, Banana Wharf at Port Hamble and Ketch Rigger at Hamble Point Marina.

Main Provisioning

There is a large Tesco's supermarket about a mile away by car, which you pass on your way to Hamble, just off the junction 8 exit of the M27. Currently there are large queues due to the Coronavirus restrictions, so would recommend you shop in advance and bring your provisioning with you.

How to find us:

By Road For Sat Navs, postcode is **SO31 4HQ**.

Hamble, also known as Hamble-le-Rice, lies off the A27 on the East side of Southampton Water, between the cities of Southampton and Portsmouth. There is a large free car park at Mercury Yacht Harbour.

Directions - Leave the M27 at junction 8 signposted Hamble/Southampton East. This will take you to a roundabout – from the East take the first exit, from the West take the third exit. At the next roundabout take the second exit. There will be a Tesco store on your left. Go straight across the next two mini roundabouts and the traffic lights. Follow this road for approximately 3/4 mile. Go straight across the next roundabout and then immediately left into Satchell Lane. Follow this road over the bridge and eventually you will see the sign for Mercury Yacht Harbour on your left where there is a free car park.

On Arrival at Mercury Yacht Harbour Please pop into our office on the left side of the car park or call Chris Warwick on arrival on T: 07798 563860.